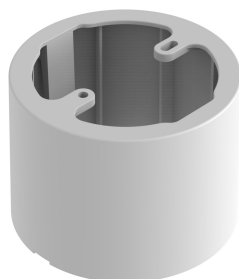


# PRODUCT DATASHEET

## EM SPOT SURFACE FRAME

EMERGENCY SPOT ACCESSORIES | Surface mounting frame, round shape for EMERGENCY SPOT



---

### Areas of application

- Antipanic lighting

---

### Product benefits

- Easy installation

---

### Product features

- Low mounting depth
- Robust polycarbonate casing

## TECHNICAL DATA

### Dimensions & Weight

Diameter	104.00 mm
Height	75.00 mm
Product weight	84.00 g



EM SPOT SURFACE FRAME

### Materials & Colors

Product color	White
Body material	Polycarbonate (PC)

### Application & Mounting

Mounting type	Surface
Mounting location	Ceiling
With light source	No
Replaceable light source	No

### Emergency lighting

Area of emergency application	Anti-panic lighting
-------------------------------	---------------------

### Certificates & Standards



Standards	CE / CB / UKCA / EAC
Luminaire with limited surface temperature, "D sign"	No

## EQUIPMENT / ACCESSORIES

– Mounting accessories included

---

**DOWNLOAD DATA**

Documents and certificates	Document name
 User instruction / safety instructions	EM SPOT
 Product information bulletin	The Emergency Range Flyer UK

---

**LOGISTICAL DATA**

Product code	Packaging unit (Pieces/Unit)	Dimensions (length x width x height)	Gross weight	Volume
4099854232183	Folding box 1	107 mm x 107 mm x 89 mm	134.00 g	1.02 dm <sup>3</sup>
4099854232190	Shipping box 20	230 mm x 230 mm x 470 mm	3080.00 g	24.86 dm <sup>3</sup>

---

The mentioned product code describes the smallest quantity unit which can be ordered. One shipping unit can contain one or more single products. When placing an order, for the quantity please enter single or multiples of a shipping unit.

---

**DISCLAIMER**

Subject to change without notice. Errors and omission excepted. Always make sure to use the most recent release.